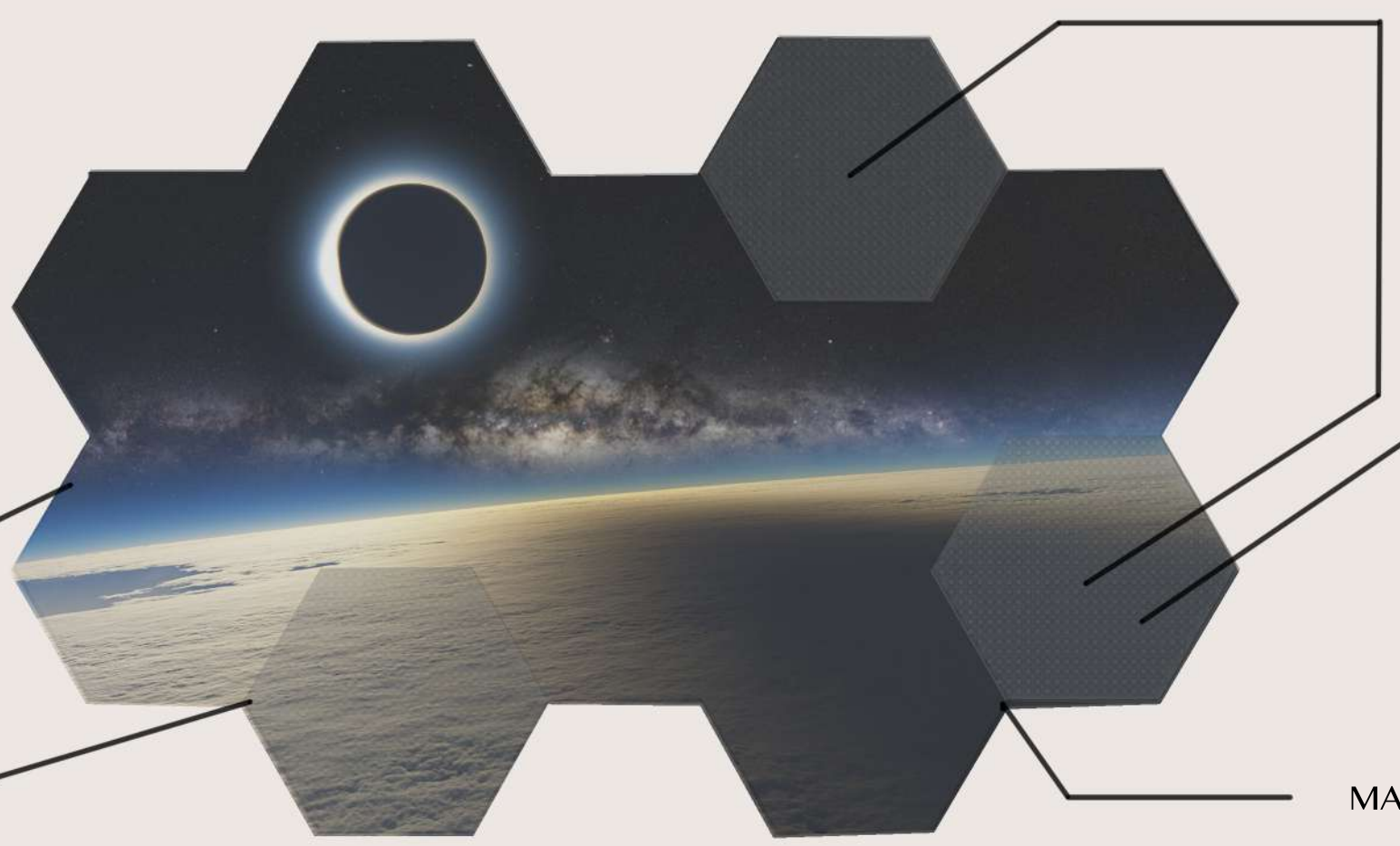


INTERACTIVE DISPLAY MAT

Students can learn, store data, explore, and see their own progress. The modules can interact with each other and connect to a larger network outside their own classroom.

This mat can be used everyday in the classroom, outside and even at home. It is lightweight, durable, and flexible so it makes it easy to store and carry around.



SPEAKERS AND SENSORS

SOLAR POWERED SCREENS

LEGO PLATFORM DISPLAY

AT THE FOLDS, A NEW CONNECTION IS REVEALED. THROUGH THESE CONNECTIONS CHILDREN CAN PROGRAM THEIR MAT TO RELATE MORE TO THE DAY'S LESSON.

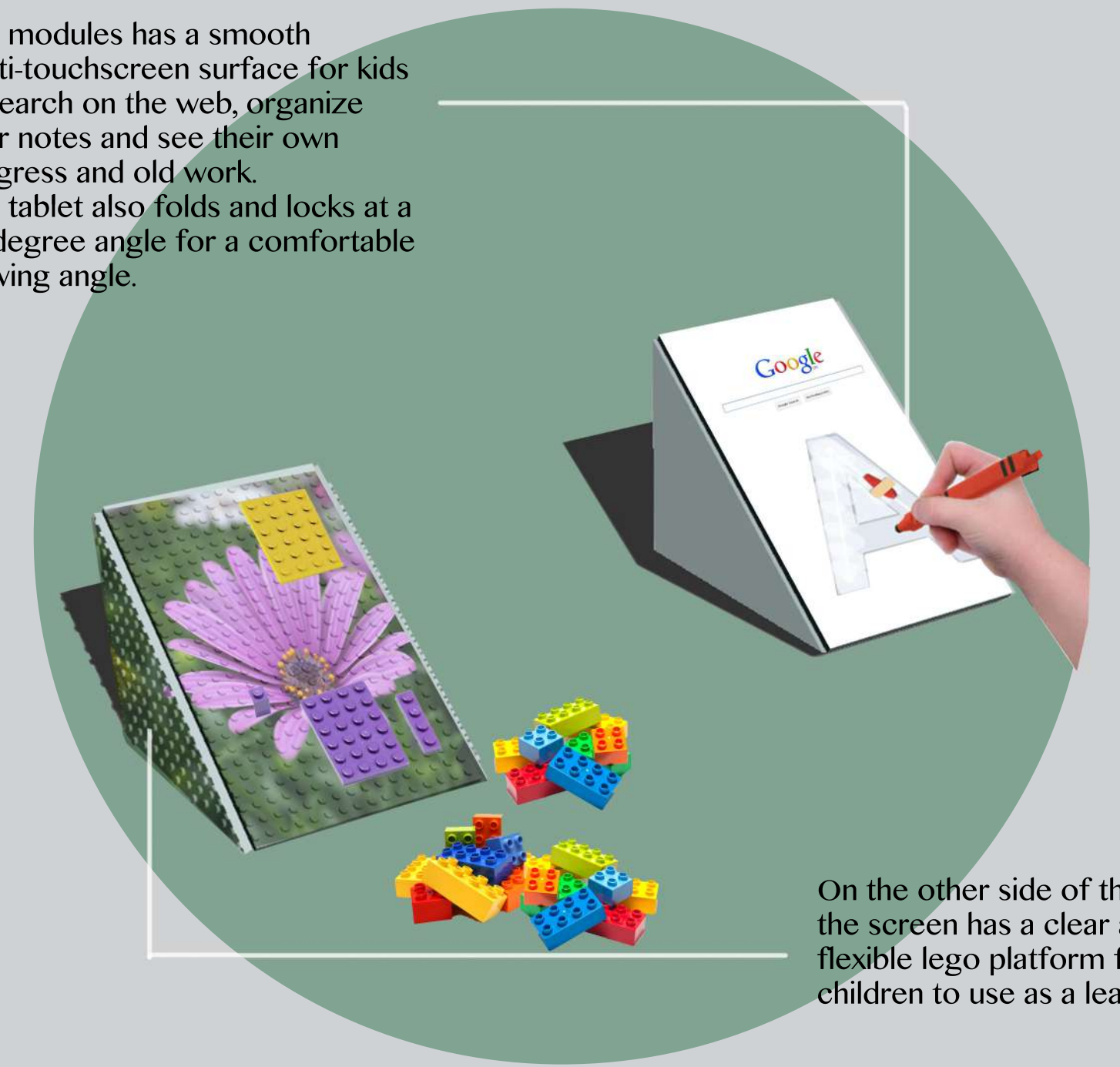
MAGNETIC CONNECTION

e:duco is an interactive display mat that facilitates hands on and digital making and learning. It is designed as a collection of maleable and flexible modules that can be reshaped and reorganized to relate to the lesson.

e:duco

This mat can be used in a classroom in which children are "assessed" by all disciplines to track the children's learning process everyday. It involves many different types of play that motivate children to learn and remember.

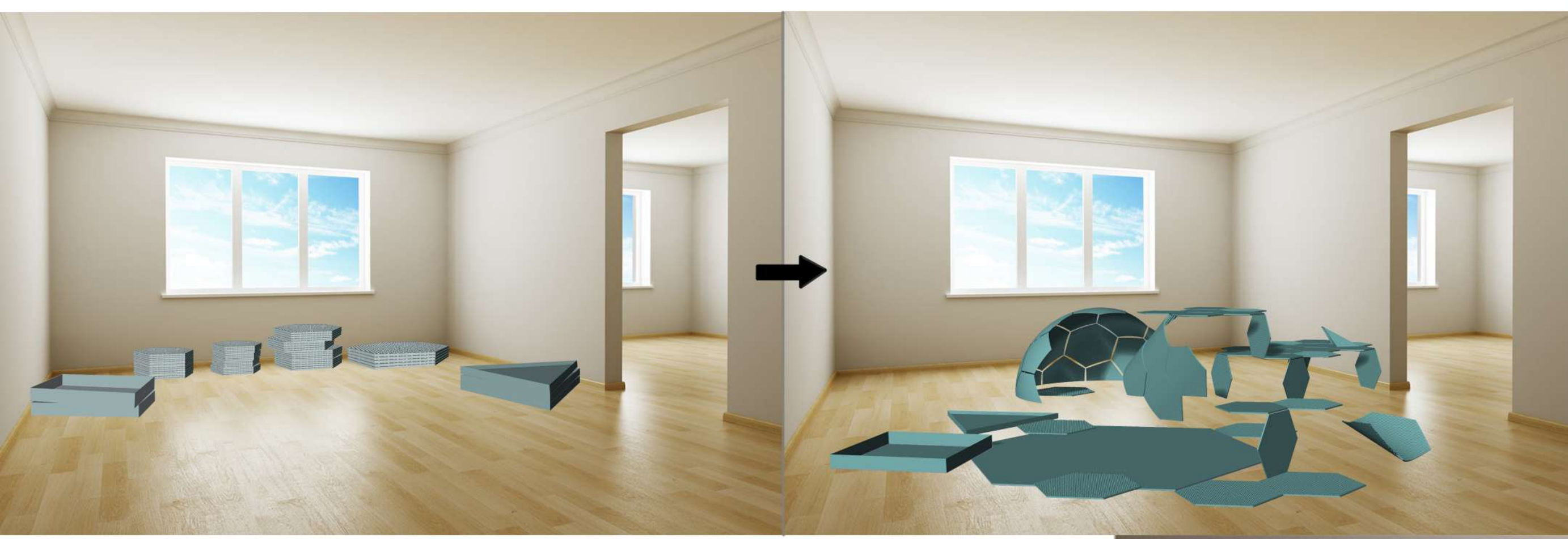
The modules has a smooth multi-touchscreen surface for kids to search on the web, organize their notes and see their own progress and old work. The tablet also folds and locks at a 30 degree angle for a comfortable veiwing angle.



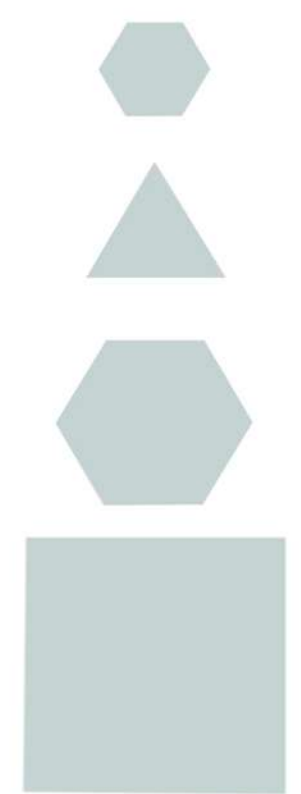
On the other side of the tablet, the screen has a clear and flexible lego platform for children to use as a learning tool.

The Routine

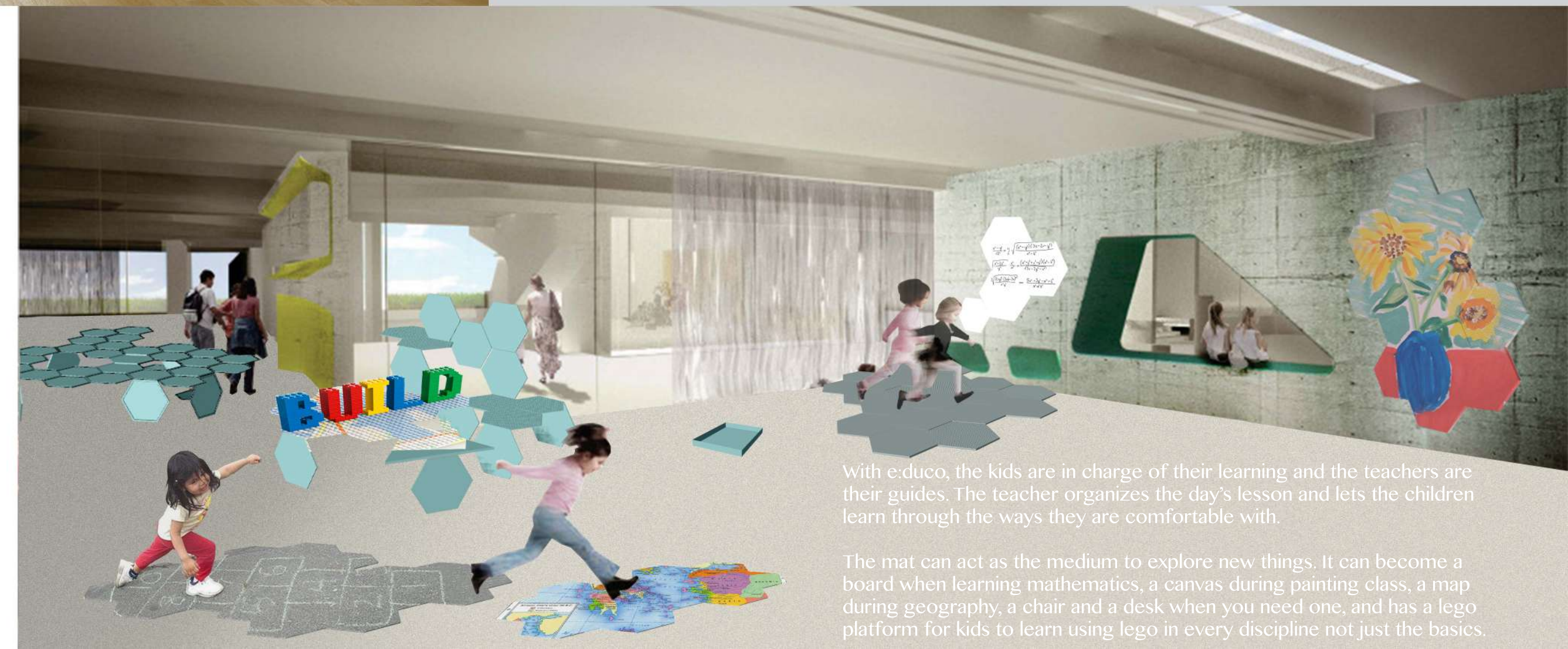
Every morning the teacher would get her own tablet or module and create the day's lesson with help of the system . She would pick the disciples to focus and the system would organize it in a way that would be fun and challenging for the children. When the childrens arrive early that mornig, the teacher would tell them the lesson and the children will have to create the space for leaning. They will have to select the tools, certain mats, and program them. This would become a habit and the children will become more creative and improve on all of their skills everyday. The children now will have a little more control in how they learn and have fun doing so.



Classroom Tools



- MY BIT: a smaller version of the learning tool. It is used for taking notes, completing assignments and activities, and sharing your work. It is the students personal workspace.
- TOOL BIT: small containers for LEGO or can become part of the display screen.
- LEARNING BIT: large displays for building the environment/screen and functions as the toolbox (block menu) and the workspace.
- VISUALIZER: main display screen in which visually shows the functions and program input from the LEARNING and MY BITS.



With e:duco, the kids are in charge of their learning and the teachers are their guides. The teacher organizes the day's lesson and lets the children learn through the ways they are comfortable with.

The mat can act as the medium to explore new things. It can become a board when learning mathematics, a canvas during painting class, a map during geography, a chair and a desk when you need one, and has a lego platform for kids to learn using lego in every discipline not just the basics.